

Certificate of Analysis

IGF-1 LR3 1 mg

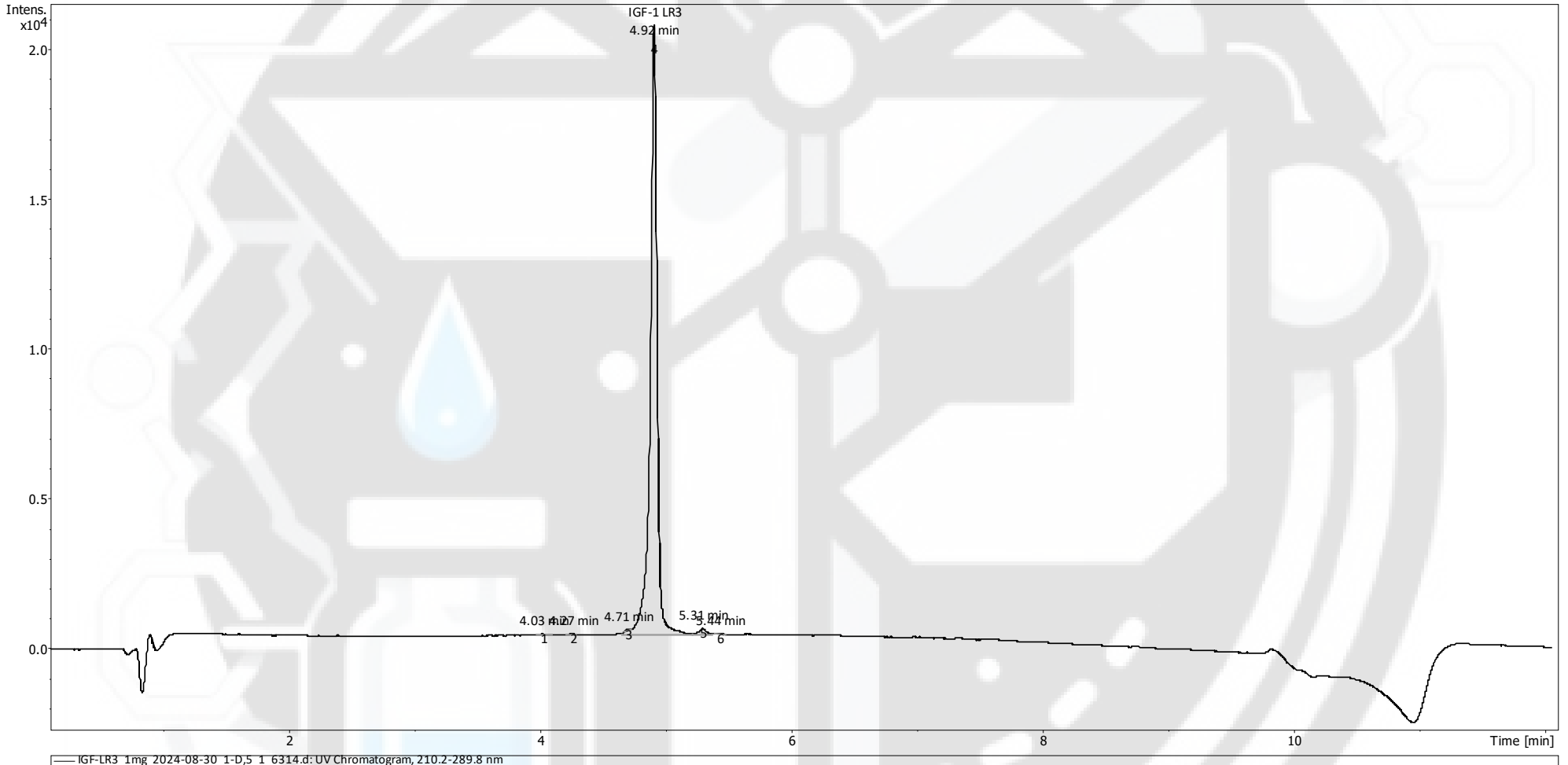
Long arginine 3 Insulin-like growth factor

Compound : IGF-1 LR3
Lot number : 2024-08-30
Analysis date : 2024-09-30
Purity % : 98.41%
Method : HPLC-UV-MS

Client : Transforma Peptides
www.transformapeptides.com

CAS 143045-27-6

High Performance Liquid Chromatography (HPLC) UV – Purity Test



Number of detected peaks: 6

PEAK LIST	Time (min)	Area	%Area	
1	4.03	1.04E+02	0.13	
2	4.27	1.25E+02	0.16	
3	4.71	1.25E+02	0.16	
4	4.92	7.71E+04	98.41	IGF-1 LR3
5	5.31	8.37E+02	1.07	
6	5.44	5.60E+01	0.07	

Analysis Performed by
 Ken Pendarvis, ChE
 Analytical Chemist
 MZ Biolabs
contact@mzbiolabs.com



2024-10-07

Note: Injectable peptides may contain salts and sugars to aid in solubility and act as pH buffers. These are not normally detected using UV and are not considered impurities.

IGF-1 LR3 1 mg

Long arginine 3 Insulin-like growth factor

CAS 143045-27-6

Mass Spectrometry (MS) – Identity Test

Identity confirmed using HPLC-MS

Molecular weight calculated using base peak m/z values from mass spectrum

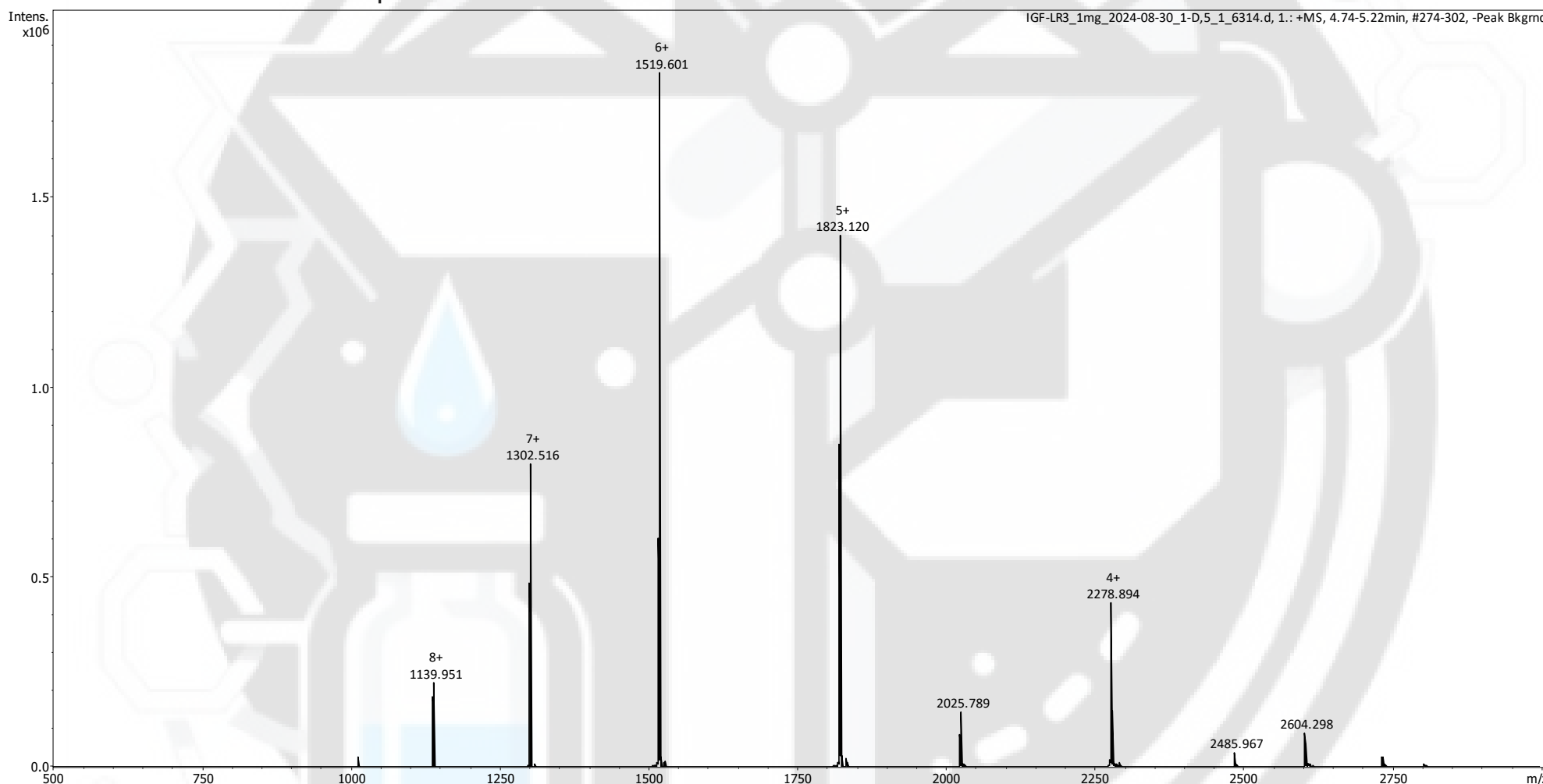
Expected average mass : 9111.4 Da

Measured base peak mass : 9110.6 Da

Molecular weight confirmed

Note : The dominant isotopic peak (base peak) shown in the spectrum below can be used to approximate the average molecular weight frequently reported by vendors and databases as a secondary means of confirmation.

Recorded MS spectrum



Analysis Performed by
Ken Pendarvis, ChE
Analytical Chemist
MZ Biolabs
contact@mzbiolabs.com



2024-10-07